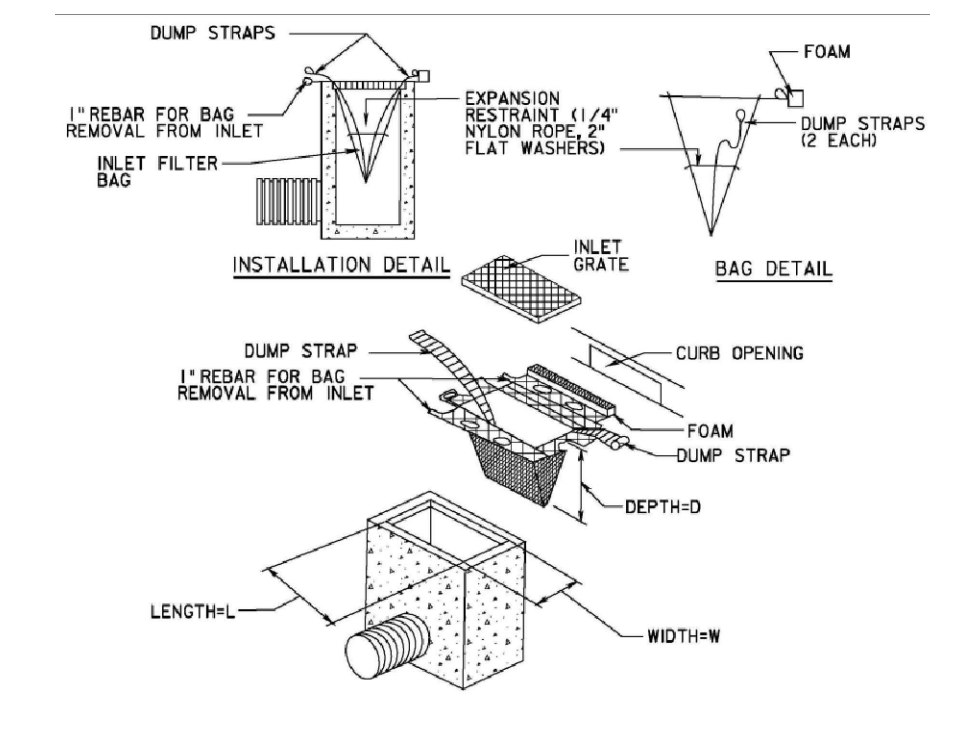


SOIL EROSION & SEDIMENT CONTROL NOTES

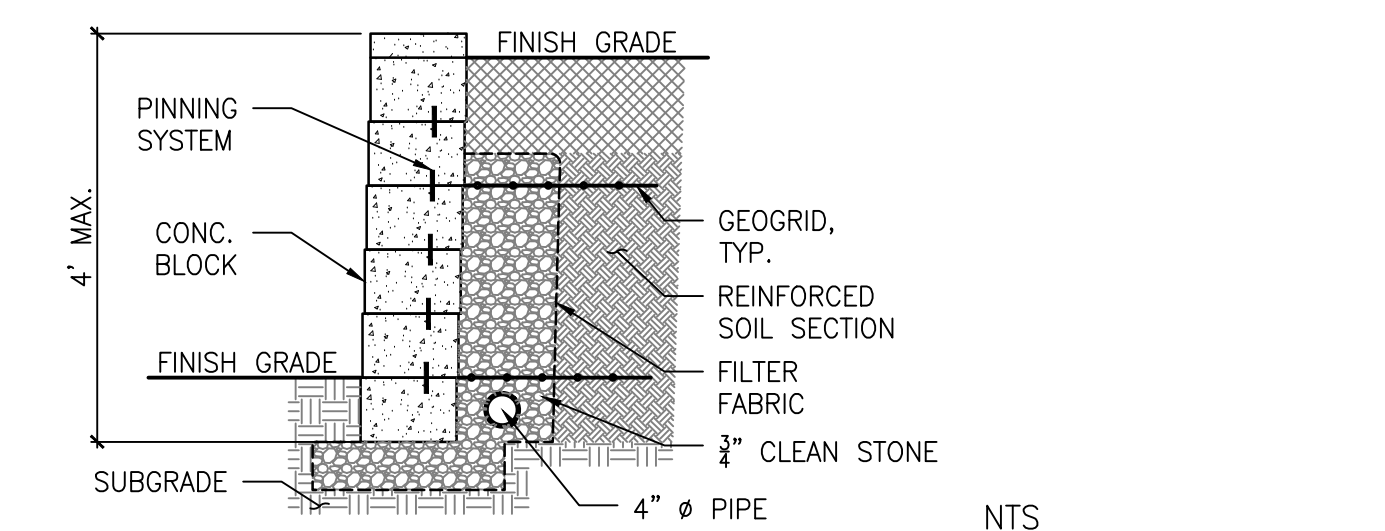
- All soil erosion and sediment control practices on this plan will be constructed in accordance with the "New Jersey Standards for Soil Erosion and Sediment Control" 7th Edition last revised July 2017, effective December 2017. These measures will be installed prior to any major soil disturbance or in their proper sequence and maintained until permanent protection is established.
- Soil to be exposed or stockpiled for a period of greater than 14 days, and not under active construction, may be required to be temporarily mulched, and seeded or otherwise provided with vegetative cover as per Appendix A3. This temporary cover shall be maintained until such time whereby permanent stabilization is established.
- Seeding Dates:** The following seeding dates are recommended to best establish permanent vegetative cover within most locations in the HEPSCD: Spring - 3/1-5/15 & Fall - 8/15 - 10/1
- Sediment fences are to be properly trenched and maintained until permanent vegetative cover is established.
- All storm drainage inlets shall be protected by one of the practices accepted in the Standards, and protection shall remain until permanent stabilization has been established. Storm drainage outlet points shall be protected as required before they become functional.
- Mulch materials shall be un-rotted small grain straw applied at the rate of 70 to 90 pounds per 1,000 square feet and anchored with a mulch anchoring tool, liquid mulch binders, or netting tie down. Other suitable materials may be used if approved by the Soil Conservation District.
- All erosion control devices shall be periodically inspected, maintained and corrected by the contractor. Any damage incurred by erosion shall be rectified immediately.
- Paved roadways must be kept clean at all times. Do not utilize a fire or garden hose to clean roads unless the runoff is directed to a properly designed and functioning sediment basin. Water pumped out of the excavated areas contains sediments that must be removed prior to discharging to receiving bodies of water using removable pumping stations, sump pits, portable sedimentation tanks and/or silt control bags.
- All surfaces having lawn or landscaping as final cover are to be provided topsoil prior to re-seeding, sodding or planting. A depth of 5.0 inches, firmed in place, is required, as per the Standards for Topsoiling and Land Grading, effective December 2017.
- Steep slopes incurring disturbance may require additional stabilization measures. These "special" measures shall be designed by the applicant's engineer and be approved by the Soil Conservation District.
- The Hudson-Essex-Passaic Soil Conservation District shall be notified, in writing, for the sale of any portion of the project or for the sale of individual lots. New owners' information shall be provided. Additional measures deemed necessary by District officials shall be implemented as conditions warrant.

SEQUENCE OF CONSTRUCTION

- | | |
|---|---------|
| 1. INSTALL EROSION & SEDIMENT CONTROL DEVICES PER EROSION CONTROL PLAN/DETAILS. | 2 DAYS |
| 2. PERFORM ROUGH GRADING; INSTALL BLOCK WALLS, BOULDERS AND LANDSCAPE STEPS. | 3 WEEKS |
| 3. INSTALL PATIO, BELGIUM BLOCK CURBING, AND DRAINAGE. | 1 WEEK |
| 4. PERFORM FINE GRADING. | 3 DAYS |
| 5. INSTALL BLACK ALUMINUM FENCING. | 1 WEEK |
| 6. INSTALL PERMANENT STABILIZATION PER PLANTING PLAN. | 2 WEEKS |
| 7. REMOVE EROSION & SEDIMENT CONTROL DEVICES. | 1 DAY |



EROSION CONTROL DETAILS



SARCONE RESIDENCE
8 Randolph Place
Verona, NJ 07044

Scale: PER PLAN
GRADING & DRAINAGE PLAN

DATE: 5/6/24
DESIGNER: Erik Rowan, LLA

This design is property of Sarcone Landscaping Services, Inc. and cannot be used without permission and consent.

SCALORA
LANDSCAPE SERVICES

382 Lackawanna Pl.
South Orange, NJ 07079
Ph: 973-313-3912
www.scalora.com